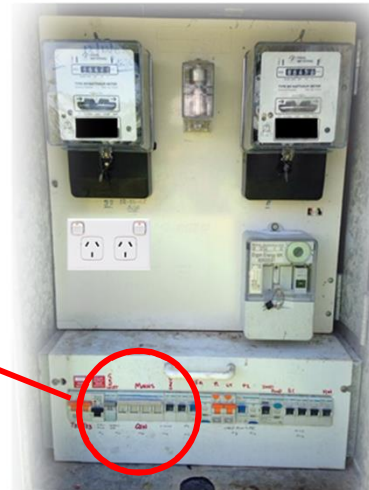
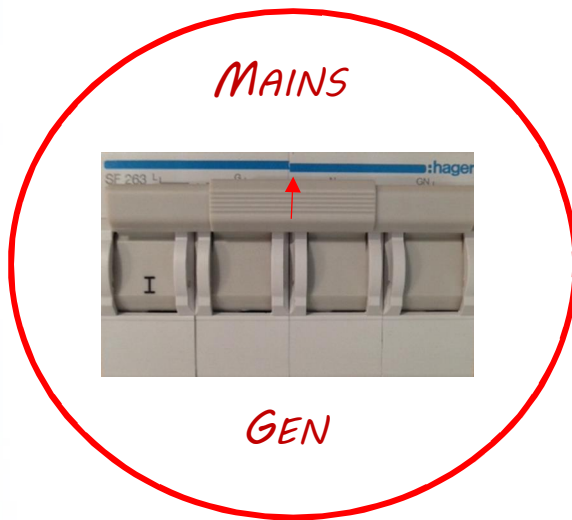


# Operating your Generator Changeover Switch

**Note:** these instructions are only for using the generator changeover switch and not for starting or using your generator. Ensure you read the generator manufacturer's instructions carefully before using your generator.

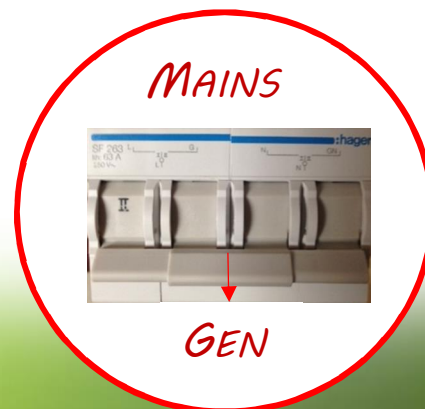
Your generator changeover switch will appear similar to the below pictures. The switch will be in the MAINS position.



1. In the event of a power outage first turn your solar system off by turning all isolation switches into the off position.



2. Now turn the generator changeover switch into the GEN position.
3. Refer to generator operation instructions.



**Green Energy**   
Technologies

*the local experts in affordable energy*