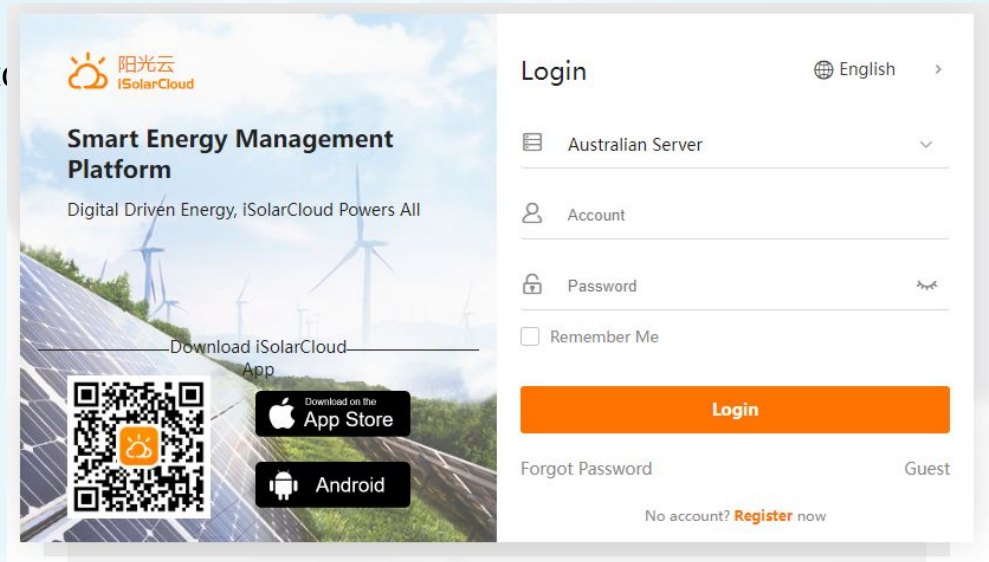


Log in guide for your GET360 monitoring system

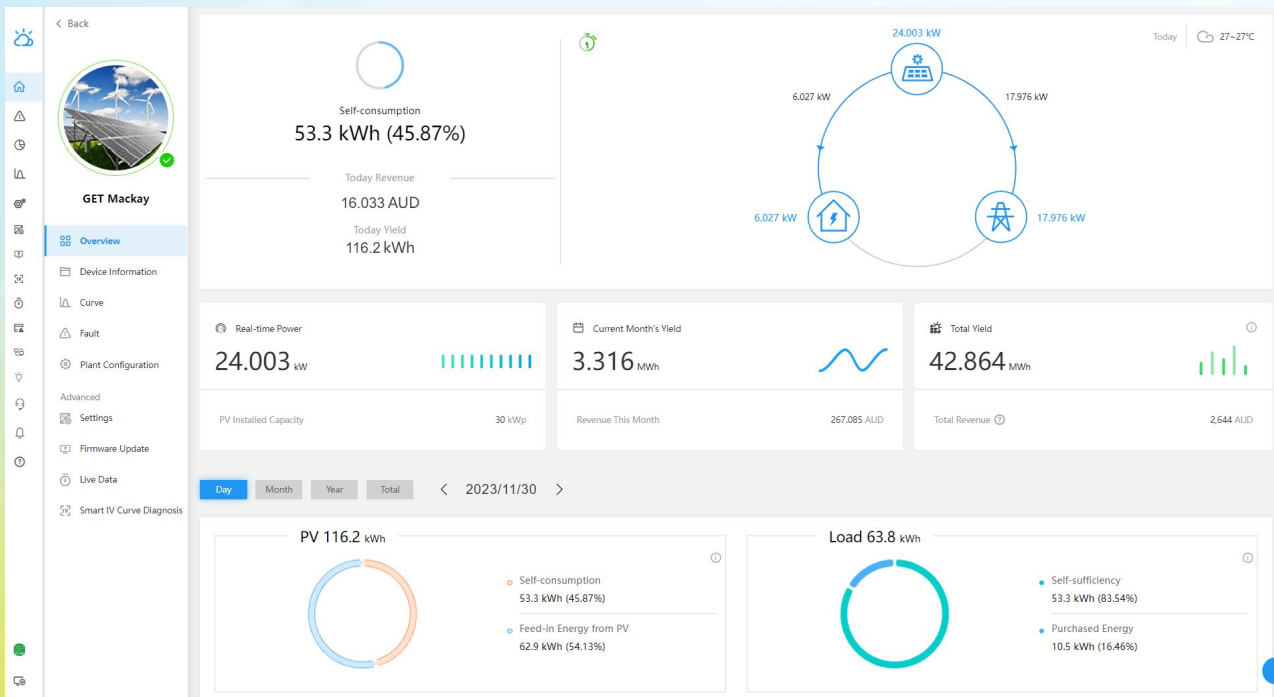
1. On the day of install, you will receive an email link from Sungrow iSolarCloud to create your monitoring password

2. In the address bar on your web browser type in www.isolarcloud.com

3. Sign in with your email address and password you created



4. The monitoring page will display an overview of your system. You will see the current readings for your system and be able to select options to view the systems history.



Note: If no data is shown on screen, the Wi-Fi may have disconnected from the inverter. To reconnect, check your Wi-Fi is working & restart the inverter.

1. Turn all isolators under the inverter to the off position.
2. Leave off for at least one minute.
3. Turn all isolators back to the on position.

*The inverter may take a couple of minutes to initiate and begin sending data to the online portal.